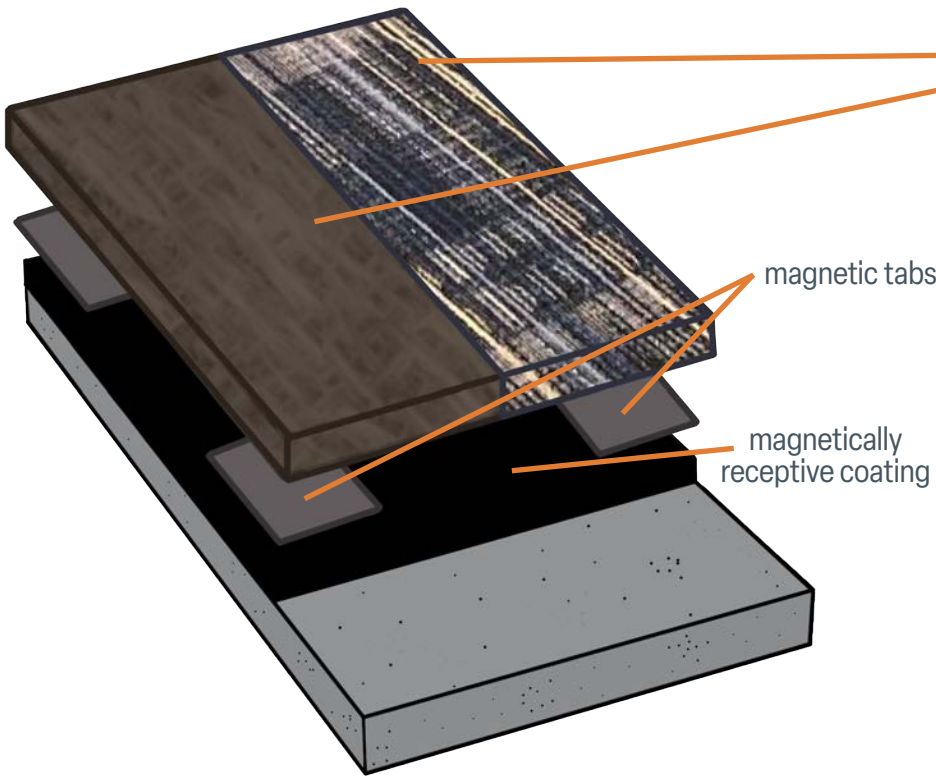


KRĒTUS

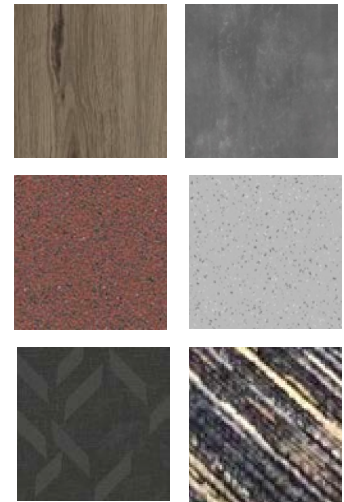


ECOMAGNETIC™

Experience the future of tile installation with KRETUS® ECOMAGNETIC™—a revolutionary system that eliminates the need for adhesives. The innovative system harnesses the power of magnets, making it incredibly easy to use on nearly any surface. Featuring reusable magnetic tabs that maintain their stickiness, you'll never have to worry about damaging your tiles or leaving behind any residue.

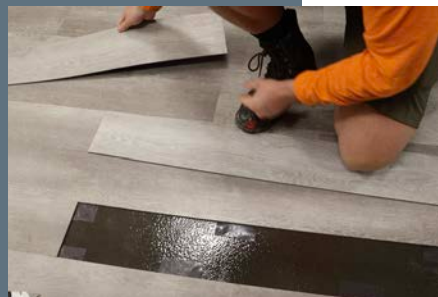


Resilient Tile:
EcoMagnetic™ Tabs can transform non-magnetic flooring such as carpet, LVT, ceramic, timber, or other resilient tiles into magnetic flooring.



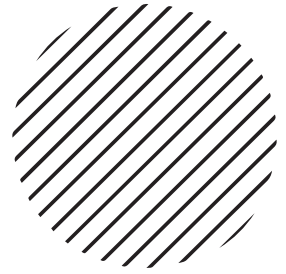
Resilient tile shown as example only.
KRETUS® does not manufacture or distribute tile.

This adhesive-free magnetic coating system lets you install and replace tile on any surface—floor, wall, countertop, you name it. And, it's as easy as replacing magnets on your fridge!



WHY THIS SYSTEM'S MAG-NEATO...

- **Fast Turnover:** You can remove and replace entire floors in hours, not days.
- **Sustainability:** Tiles aren't damaged by adhesives, so they can be reused rather than going to a landfill.
- **Low-cost repairs:** Replacing single tiles is easy and doesn't require a professional.



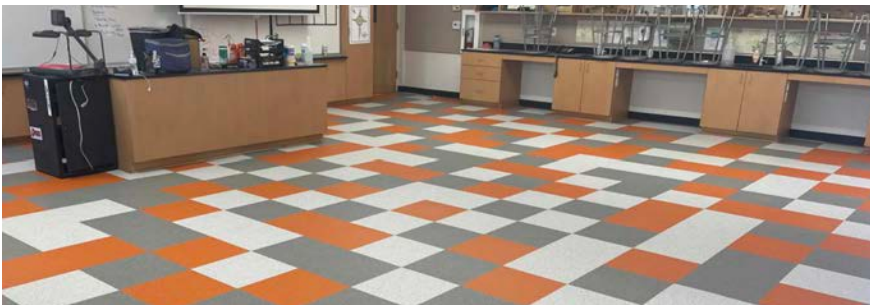
Cruise Lines: Swap out carpet between guest stays.



Hotels & Venues: Transform spaces for weddings, concerts, and special events.



Sport Arenas: Match workout rooms to visiting team colors.

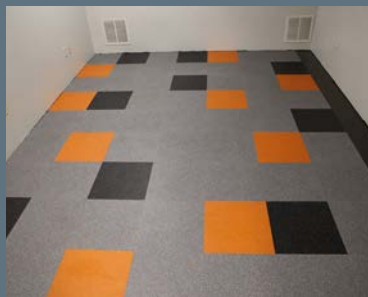


School Districts: Replace damaged tiles without disrupting classes.



Offices & Lobbies: Upgrade flooring to keep morale high and work flowing.

SAME FLOOR FOUR WAYS...





THOUGHTFULLY DESIGNED COATINGS



Our adaptable coatings give skilled contractors the ability to meet client's needs under ever-changing environments, budgets, and deadlines.

Hygienic Walls, Floors & Ceilings For

- Employee Service Facilities
- Freezer & Cold Storage
- Loading Docks
- Maintenance Areas
- Production Floors
- Test Kitchens
- Warehousing
- Wastewater Treatment

Decorative and Functional Systems

- Color Chip
- Color Quartz
- Color Splash
- concrete priming, polishing, and patching
- crack and joint repair
- EcoMagnetic™
- ESD (Static Control)
- Industrial Sand
- moisture mitigation
- Terrazzo
- Top Shelf® Metallic

Water- and Solvent-based Coatings

- Acrylic Polymer Concrete
- Acrylic Sealers
- EcoMagnetic™
- Polyaspartic*
- Polyurethane*
- Top Shelf® Epoxy*
- Urethane Polymer Concrete*
- WB Epoxy*

*modular product lines have mix-and-match components



Scan code for kretus.com

General Questions | 714.694.2061 | info@kretus.com
Technical Questions | Samet Dy - 860.480.7978 - samet@kretus.com | Michael Mulnix - 916.757.4075 - michael@kretus.com
Distributed by Jon-Don | 1.800.400.9473 | jondon.com