

**KRĒTUS**



**PRODUCT CATALOG**



# Kretus

## THOUGHTFULLY DESIGNED COATINGS



Our team of experts works closely with you to **make every installation a success.**

Receive On-the-Job Assistance

Watch and Attend Technical Training Videos and Classes

Customize with Unique Colors and Formulations

### INNOVATIVE

Ever Developing New Technologies

### ADAPTABLE

Mix-and-Match Modular Coatings

### FAST

Quick Turnaround without Compromising Quality

FIND US *online!*



**If you're into games, memes, and jobsite pics:** Find us on Instagram, Facebook, & LinkedIn.



**For installation tips, tricks, and more:** Subscribe to our newsletter & YouTube channel.

# INDEX

Click the product name or page number to jump to that page.

- Modular Coatings
  - Top Shelf® Epoxy.....4
  - Urethane Polymer Concrete.....7
  - Polyaspartic.....10
  - Polyurethane.....12
  - Acrylics.....14
- ESD (Static Control)
  - Traditional ESD.....16
  - Nanotube ESD.....17
- WB Epoxy.....18
- Metallic.....19
- Aliphatic MC.....20
- Hydrothane.....20
- EcoMagnetic™.....20
- Matting Additive.....21
- Cleaning Products.....21
- Anti-Graffiti.....21
- Anti-Slip.....22
- Colorants.....23
- Hard Samples.....24
- Select Kits.....26



kretus.com/  
home

Scan QR codes to learn more about  
the featured product or system.



Satisfy USDA, FDA, EPA, and SCAQMD VOC Requirements  
Meet LEED Indoor Air Quality Standards  
Increase Protection and Longevity With Premium Options



# TOP SHELF® EPOXY (TSE)

adaptable • 100%-solids • two-component • applicator skill level 1-5

Mix and match components to meet your installation needs.



Before selecting, consider temperature, humidity, schedule, applicator's skill level, and substrate.

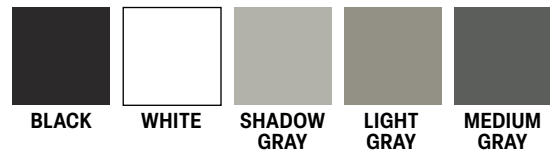
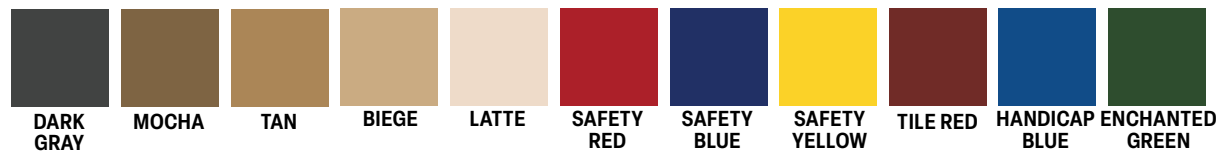
### CHOOSE PART A

- A-RESIN** premium all purpose
- CAST-RESIN** countertops, resin art
- COMMERCIAL-RESIN** primer and base
- COVE-RESIN** wall cove, crack filler
- CR-RESIN** high chemical resistance
- FLEX-RESIN** plywood substrates
- T-RESIN** terrazzo

### CHOOSE PART B

- EZ** long working time, high application temps
- AP** all purpose
- TH** low moisture tolerant base coat
- FC** fast cure, low application temps
- MVR-EZ** moisture vapor reduction, slow cure
- MVR-FC** moisture vapor reduction, fast cure

Apply it **CLEAR**,  
**PIGMENTED**, or  
add **TSE COLORANT**:



**KITS: SAMPLE (24 OZ) • STANDARD (1.5 GAL) • DOUBLE (3 GAL) • T-RESIN (6 GAL)**  
**BULK ITEMS: BUCKET (5 GAL) • DRUM (50 GAL) • TOTE (275 GAL)**





**PART B, HARDENERS**  
SEE PART A FOR MIX RATIO

	8 OZ	½ GALLON	1 GALLON	5 GALLON	50 GALLON	275 GALLON
AP	FG-TSEBAP-08FOZ	FG-TSEBAP-HG	FG-TSEBAP-01G	FG-TSEBAP-05G	FG-TSEBAP-50G	FG-TSEBAP-275G
EZ	FG-TSEBEZ-08FOZ	FG-TSEBEZ-HG	FG-TSEBEZ-01G	FG-TSEBEZ-05G	FG-TSEBEZ-50G	FG-TSEBEZ-275G
TH	FG-TSEBTH-08FOZ	FG-TSEBTH-HG	FG-TSEBTH-01G	FG-TSEBTH-05G	FG-TSEBTH-50G	FG-TSEBTH-275G
FAST	FG-TSEBFA-08FOZ	FG-TSEBFA-HG	FG-TSEBFA-01G	FG-TSEBFA-05G	FG-TSEBFA-50G	FG-TSEBFA-275G
MVR-EZ	FG-TSEBMEZ-08FOZ	FG-TSEBMEZ-HG	FG-TSEBMEZ-01G	FG-TSEBMEZ-05G	FG-TSEBMEZ-50G	FG-TSEBMEZ-275G
MVR-FC	FG-TSEBMFC-08FOZ	FG-TSEBMFC-HG	FG-TSEBMFC-01G	FG-TSEBMFC-05G	FG-TSEBMFC-50G	FG-TSEBMFC-275G

**PART A, A-RESIN**  
MIX RATIO = 2A:1B (Example: 1 gal A:1/2 gal B)

	16 OZ	1 GALLON	2 GALLON	5 GALLON	50 GALLON	275 GALLON
Beige	FG-TSEABEI-16FOZ	FG-TSEABEI-01G	FG-TSEABEI-02G	FG-TSEABEI-05G	FG-TSEABEI-50G	-
Black	FG-TSEABLK-16FOZ	FG-TSEABLK-01G	FG-TSEABLK-02G	FG-TSEABLK-05G	FG-TSEABLK-50G	-
Clear	FG-TSEACLR-16FOZ	FG-TSEACLR-01G	FG-TSEACLR-02G	FG-TSEACLR-05G	FG-TSEACLR-50G	FG-TSEACLR-275G
Dark Gray	FG-TSEADGY-16FOZ	FG-TSEADGY-01G	FG-TSEADGY-02G	FG-TSEADGY-05G	FG-TSEADGY-50G	-
Enchanted Green	FG-TSEAEGN-16FOZ	FG-TSEAEGN-01G	FG-TSEAEGN-02G	FG-TSEAEGN-05G	FG-TSEAEGN-50G	-
Handicap Blue	FG-TSEAHBL-16FOZ	FG-TSEAHBL-01G	FG-TSEAHBL-02G	FG-TSEAHBL-05G	FG-TSEAHBL-50G	-
Latte	FG-TSEALAT-16FOZ	FG-TSEALAT-01G	FG-TSEALAT-02G	FG-TSEALAT-05G	FG-TSEALAT-50G	-
Light Gray	FG-TSEALGY-16FOZ	FG-TSEALGY-01G	FG-TSEALGY-02G	FG-TSEALGY-05G	FG-TSEALGY-50G	-
Medium Gray	FG-TSEAMGY-16FOZ	FG-TSEAMGY-01G	FG-TSEAMGY-02G	FG-TSEAMGY-05G	FG-TSEAMGY-50G	-
Mocha	FG-TSEAMOC-16FOZ	FG-TSEAMOC-01G	FG-TSEAMOC-02G	FG-TSEAMOC-05G	FG-TSEAMOC-50G	-
Safety Blue	FG-TSEASAB-16FOZ	FG-TSEASAB-01G	FG-TSEASAB-02G	FG-TSEASAB-05G	FG-TSEASAB-50G	-
Safety Red	FG-TSEASAR-16FOZ	FG-TSEASAR-01G	FG-TSEASAR-02G	FG-TSEASAR-05G	FG-TSEASAR-50G	-
Safety Yellow	FG-TSEASAY-16FOZ	FG-TSEASAY-01G	FG-TSEASAY-02G	FG-TSEASAY-05G	FG-TSEASAY-50G	-
Shadow Gray	FG-TSEASHG-16FOZ	FG-TSEASHG-01G	FG-TSEASHG-02G	FG-TSEASHG-05G	FG-TSEASHG-50G	-
Tan	FG-TSEATAN-16FOZ	FG-TSEATAN-01G	FG-TSEATAN-02G	FG-TSEATAN-05G	FG-TSEATAN-50G	-
Tile Red	FG-TSEATRD-16FOZ	FG-TSEATRD-01G	FG-TSEATRD-02G	FG-TSEATRD-05G	FG-TSEATRD-50G	-
White	FG-TSEAWHT-16FOZ	FG-TSEAWHT-01G	FG-TSEAWHT-02G	FG-TSEAWHT-05G	FG-TSEAWHT-50G	-

**PART A, SPECIALTY RESINS**

**MIX RATIO = 2A:1B (Example: 1 gal A:1/2 gal B)**

	16 OZ	1 GALLON	2 GALLON	5 GALLON	50 GALLON	275 GALLON
Cast Resin - Clear	FG-TSECRCLR-16FOZ	FG-TSECRCLR-01G	FG-TSECRCLR-02G	FG-TSECRCLR-05G	-	-
Commercial Resin - Beige	-	FG-TSECMRBEI-01G	FG-TSECMRBEI-02G	FG-TSECMRBEI-05G	-	-
Commercial Resin - Clear	-	FG-TSECMRCLR-01G	FG-TSECMRCLR-02G	FG-TSECMRCLR-05G	FG-TSECMRCLR-50G	FG-TSECMRCLR-275G
Commercial Resin - Latte	-	FG-TSECMRLAT-01G	FG-TSECMRLAT-02G	FG-TSECMRLAT-05G	-	-
Commercial Resin - Light Gray	-	FG-TSECMRLGY-01G	FG-TSECMRLGY-02G	FG-TSECMRLGY-05G	-	-
Commercial Resin - Medium Gray	-	FG-TSECMRMGY-01G	FG-TSECMRMGY-02G	FG-TSECMRMGY-05G	-	-
Cove Resin - Clear	-	FG-TSECVRCLR-01G	FG-TSECVRCLR-02G	FG-TSECVRCLR-05G	-	-
CR Resin - Clear	-	FG-TSECRCLR-01G	FG-TSECRCLR-02G	FG-TSECRCLR-05G	-	-
Flex Resin - Clear	-	FG-TSEFACLR-01	-	FG-TSEFACLR-05	-	-

**PART A, SPECIALTY RESINS**

**MIX RATIO = 5A:1B (Example: 5 gal A:1 gal B)**

	1 GALLON	5 GALLON
T-Resin - Clear	FG-TSETCLR-01G	FG-TSETCLR-05G

**PART C, AGGREGATE**

**MIX RATIO = 25 lbs per 1.5-gal kit**

	25 lbs
SG Part C - Slurry Grade	FG-TSEPASG-25LB

**ACCELERANT**

**MIX RATIO = 8-16 oz per 1.5-gal kit**

	8 OZ	1 GALLON
Epoxy Accelerant	FG-TSEACCLR-08FOZ	FG-TSEACCLR-01G

**EPOXY PATCH**

**MIX RATIO = 1A:1B (Example: 1 gal A:1 gal B)**

<b>PART A</b>	<b>1 GALLON</b>
Top Shelf® Epoxy Patch	FG-EZPCLRA-01G
<b>PART B</b>	<b>1 GALLON</b>
Top Shelf® Epoxy Patch - EZ	FG-EZPCLRB-01G
Top Shelf® Epoxy Patch - FC	FG-EZPCLRBFC-01G

**COLORANT**

**MIX RATIO = 16 oz per 1 gal of TSE Clear**

	16 OZ	1 GALLON
Beige	FG-TSECLBEI-16FOZ	FG-TSECLBEI-01G
Black	FG-TSECLBLK-16FOZ	FG-TSECLBLK-01G
Dark Gray	FG-TSECLDGY-16FOZ	FG-TSECLDGY-01G
Enchanted Green	FG-TSECLEGN-16FOZ	FG-TSECLEGN-01G
Handicap Blue	FG-TSECLHAB-16FOZ	FG-TSECLHAB-01G
Latte	FG-TSECLLAT-16FOZ	FG-TSECLLAT-01G
Light Gray	FG-TSECLLGY-16FOZ	FG-TSECLLGY-01G
Medium Gray	FG-TSECLMGY-16FOZ	FG-TSECLMGY-01G
Mocha	FG-TSECLMOC-16FOZ	FG-TSECLMOC-01G
Safety Blue	FG-TSECLSAB-16FOZ	FG-TSECLSAB-01G
Safety Red	FG-TSECLSAR-16FOZ	FG-TSECLSAR-01G
Safety Yellow	FG-TSECLSAY-16FOZ	FG-TSECLSAY-01G
Shadow Gray	FG-TSECLSHG-16FOZ	FG-TSECLSHG-01G
Tan	FG-TSECLTAN-16FOZ	FG-TSECLTAN-01G
Tile Red	FG-TSECLTRD-16FOZ	FG-TSECLTRD-01G
White	FG-TSECLWHT-16FOZ	FG-TSECLWHT-01G



# URETHANE POLYMER CONCRETE (UPC)

adaptable • 100%-solids • three-and four-component • applicator skill level 3-5

Mix and match components to meet your installation needs.



Before selecting, consider temperature, humidity, schedule, applicator's skill level, and substrate.

## CHOOSE A COATING (PART C)

- RC** roll coat, 5–30 mils
- SL** self-leveler, 1/8–1/4"
- MF** heavy-duty self-leveler, 1/8–1/4"
- TT** tight trowel, 1/4–4"
- WC** wall cove, 1-10"
- VC** vertical coat, 3–8 mils

## MATCH THE LETTERS & CHOOSE PART B

- RC/TT, SL/MF, OR WC/VC**
- EZ** high application temps
- AP** all purpose
- FC** low application temps

## Apply it UNPIGMENTED or add UPC COLORANT:



## MATCH THE LETTERS FOR PART A

**RC/TT | SL/MF | WC/VC**

**KITS: SINGLE/STANDARD • DOUBLE**  
**BULK ITEMS: DRUM • TOTE**



**RC (ROLL COAT)**

PART A	SINGLE KIT 6 lbs A:6 lbs B:6 lbs C	DOUBLE KIT 12 lbs A:12 lbs B:12 lbs C
RC/TT	FG-UPCARCTT-06LB	FG-UPCARCTT-12LB
<b>PART B</b>		
RC/TT EZ	FG-UPCBRTEZ-06LB	FG-UPCBRTEZ-12LB
RC/TT AP	FG-UPCBRTAP-06LB	FG-UPCBRTAP-12LB
RC/TT FC	FG-UPCBRTFC-06LB	FG-UPCBRTFC-12LB
<b>PART C</b>		
RC	FG-UPCCRC-06LB	FG-UPCCRC-12LB

**SL (SELF-LEVELER)**

PART A	SINGLE KIT 8 lbs A:8 lbs B:25 lbs C	DOUBLE KIT 16 lbs A:16 lbs B:50 lbs C
SL/MF	FG-UPCASLMF-08LB	FG-UPCASLMF-16LB
<b>PART B</b>		
SL/MF EZ	FG-UPCBSMEZ-08LB	FG-UPCBSMEZ-16LB
SL/MF AP	FG-UPCBSMAP-08LB	FG-UPCBSMAP-16LB
SL/MF FC	FG-UPCBSMFC-08LB	FG-UPCBSMFC-16LB
<b>PART C</b>		
SL	FG-UPCCSL-25LB	FG-UPCCSL-25LB*

**WC (WALL COVE)**

PART A	SINGLE KIT 3 lbs A:3 lbs B:30 lbs C
WC/VC	FG-UPCAWVCV-03LB
<b>PART B</b>	
WC/VC EZ	FG-UPCBWVEZ-03LB
WC/VC FC	FG-UPCBWVFC-03LB
<b>PART C</b>	
WC	FG-UPCCWC-30LB

**TT (TIGHT TROWEL)**

PART A	SINGLE KIT 6 lbs A:6 lbs B:42 lbs C	DOUBLE KIT 12 lbs A:12 lbs B:84 lbs C
RC/TT	FG-UPCARCTT-06LB	FG-UPCARCTT-12LB
<b>PART B</b>		
RC/TT EZ	FG-UPCBRTEZ-06LB	FG-UPCBRTEZ-12LB
RC/TT AP	FG-UPCBRTAP-06LB	FG-UPCBRTAP-12LB
RC/TT FC	FG-UPCBRTFC-06LB	FG-UPCBRTFC-12LB
<b>PART C</b>		
TT	FG-UPCCTT-42LB	FG-UPCCTT-42LB*

**MF (HEAVY-DUTY SELF-LEVELER)**

PART A	SINGLE KIT 8 lbs A:8 lbs B:40 lbs C	DOUBLE KIT 16 lbs A:16 lbs B:80 lbs C
SL/MF	FG-UPCASLMF-08LB	FG-UPCASLMF-16LB
<b>PART B</b>		
SL/MF EZ	FG-UPCBSMEZ-08LB	FG-UPCBSMEZ-16LB
SL/MF AP	FG-UPCBSMAP-08LB	FG-UPCBSMAP-16LB
SL/MF FC	FG-UPCBSMFC-08LB	FG-UPCBSMFC-16LB
<b>PART C</b>		
MF	FG-UPCCMF-40LB	FG-UPCCMF-40LB*

**VC (VERTICAL COAT)**

PART A	SINGLE KIT 3 lbs A:3 lbs B:3.5 lbs C
WC/VC	FG-UPCAWVCV-03LB
<b>PART B</b>	
WC/VC EZ	FG-UPCBWVEZ-03LB
WC/VC FC	FG-UPCBWVFC-03LB
<b>PART C</b>	
VC	FG-UPCCVC-EA

\* Will need 2 bags of Part C for double kits



**UV (UV-RESISTANT ROLL COAT)**

<b>PART A</b>	<b>SINGLE KIT 6 lbs A:6 lbs B:6 lbs C:D*</b>	<b>DOUBLE KIT 12 lbs A:12 lbs B:12 lbs C:D*</b>
<b>RC/TT</b>	FG-UPCARCTT-06LB	FG-UPCARCTT-12LB
<b>PART B</b>		
<b>RC/TT UV</b>	FG-UPCBRUAP-06LB	FG-UPCBRUAP-12LB
<b>PART C</b>		
<b>RC</b>	FG-UPCCRC-06LB	FG-UPCCRC-12LB
<b>PART D*</b>		
<b>Poly Accelerant</b>	2-6 oz	4-12 oz

**POLY ACCELERANT**

**MIX RATIO = 2-6 oz per single kit**

	<b>6 OZ</b>	<b>32 OZ</b>	<b>1 GALLON</b>
<b>Poly Accelerant</b>	FG-PACCLR-06FOZ	FG-PACCLR-32FOZ	FG-PACCLR-01

**COLORANT**

**MIX RATIO = 4 oz per single kit**

	<b>4 OZ</b>	<b>1 GALLON</b>
<b>Black</b>	FG-UPCCLBLK-04FOZ	FG-UPCCLBLK-01G
<b>Blue</b>	FG-UPCCLBLU-04FOZ	FG-UPCCLBLU-01G
<b>Bone</b>	FG-UPCCLBON-04FOZ	FG-UPCCLBON-01G
<b>Brown</b>	FG-UPCCLBRN-04FOZ	FG-UPCCLBRN-01G
<b>Clay</b>	FG-UPCCLCLY-04FOZ	FG-UPCCLCLY-01G
<b>Gray</b>	FG-UPCCLGRY-04FOZ	FG-UPCCLGRY-01G
<b>Green</b>	FG-UPCCLGRN-04FOZ	FG-UPCCLGRN-01G
<b>Mustard</b>	FG-UPCCLMUS-04FOZ	FG-UPCCLMUS-01G
<b>Red</b>	FG-UPCCLRED-04FOZ	FG-UPCCLRED-01G

**PALLET - UPC RC**

<b>UPC RC</b>	<b>20KITS/1 PALLET</b>
<b>EZ - 20 double kits</b>	KIT-3RCEZ20
<b>AP - 20 double kits</b>	KIT-3RCAP20
<b>FC - 20 double kits</b>	KIT-3RCFC20
<b>UV - 20 double kits</b>	KIT-3RCUV20**

**PALLET - UPC SL**

<b>UPC SL</b>	<b>30 KITS/2 PALLETS</b>
<b>EZ - 30 double kits</b>	KIT-3SLEZ30
<b>AP - 30 double kits</b>	KIT-3SLAP30
<b>FC - 30 double kits</b>	KIT-3SLFC-30

**BULK ORDERS**

<b>PART A</b>	<b>DRUM 441 lbs</b>	<b>TOTE 2205 lbs</b>
<b>Part A</b>	EX-KUPCADRM-EA	EX-KUPCATOT-EA
<b>PART B</b>	<b>DRUM 496 lbs</b>	<b>TOTE 2300 lbs</b>
<b>EZ</b>	EX-KUPCBZDM-EA	EX-KUPCBZTT-EA
<b>AP</b>	EX-KUPBAP-EA	EX-KURPBAP-EA
<b>FC</b>	EX-KUPCBFDM-EA	EX-KUPCBFTT-EA

\* See Poly Accelerant Mix Ratio    \*\* Part D Poly Accelerant sold separately

# POLYASPARTIC (PA)

adaptable • high-solids • two-component • applicator skill level 3-5

Mix and match components to meet your installation needs.



Before selecting, consider temperature, humidity, schedule, applicator's skill level, and substrate.

## CHOOSE PART B

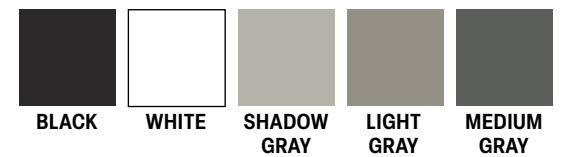
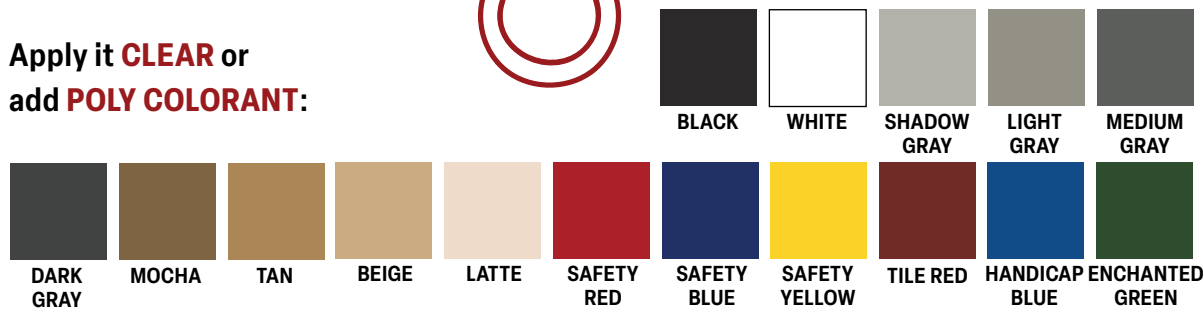
- 72% solids, concrete primer, 8-14 mils**
- 85% solids, all purpose, 8-14 mils**
- 92 LOW ODOR 100% solids, cold storage to -20°F, concrete repair, all purpose, 8-14 mils**

## MATCH THE NUMBER & CHOOSE PART A

**72, 85, OR 92 LOW ODOR**

- EZ** high application temps
- FC** low to mid application temps & low RH
- XFC** low to freezing application temps & low RH

Apply it **CLEAR** or add **POLY COLORANT**:



**KITS: SAMPLE (16 OZ) • STANDARD (2 GAL)**  
**BULK ITEMS: BUCKET (5 GAL) • DRUM (50 GAL)**



**PART A**  
SEE PART B FOR MIX RATIO

72	8 OZ	1 GALLON	5 GALLON	50 GALLON
EZ	FG-PA72AEZ-08FOZ	FG-PA72AEZ-01G	FG-PA72AEZ-05G	FG-PA72AEZ-50G
FC	FG-PA72AFC-08FOZ	FG-PA72AFC-01G	FG-PA72AFC-05G	FG-PA72AFC-50G
85	8 OZ	1 GALLON	5 GALLON	50 GALLON
EZ	FG-PA85AEZ-08FOZ	FG-PA85AEZ-01G	FG-PA85AEZ-05G	FG-PA85AEZ-50G
FC	FG-PA85AFC-08FOZ	FG-PA85AFC-01G	FG-PA85AFC-05G	FG-PA85AFC-50G
XFC	-	FG-PA85AXFC-01G	FG-PA85AXFC-05G	FG-PA85AXFC-50G
92	8 OZ	1 GALLON	5 GALLON	50 GALLON
EZ	FG-PA92AEZ-08FOZ	FG-PA92AEZ-01G	FG-PA92AEZ-05G	FG-PA92AEZ-50G
FC	FG-PA92AFC-08FOZ	FG-PA92AFC-01G	FG-PA92AFC-05G	FG-PA92AFC-50G
XFC	-	FG-PA92AXFC-01G	FG-PA92AXFC-05G	FG-PA92AXFC-50G

**PART B**  
MIX RATIO = 1A:1B (Example: 1 gal A:1 gal B)

	8 OZ	1 GALLON	5 GALLON	50 GALLON
72	FG-PA72B-08FOZ	FG-PA72B-01G	FG-PA72B-05G	FG-PA72B-50G
85	FG-PA85B-08FOZ	FG-PA85B-01G	FG-P85B-05G	FG-PA85B-50G
92	FG-PA92B-08FOZ	FG-PA92B-01G	FG-PA92B-05G	FG-PA92B-50G

**PART C, AGGREGATE**  
MIX RATIO = 25 lbs per 2-gal kit

	25 lbs
SG Part C - Slurry Grade	FG-TSEPASG-25LB

**ACCELERANT**  
MIX RATIO = 4-6 oz per 2-gal kit

	6 OZ	32 OZ	1 GALLON
Poly Accelerant	FG-PACCLR-06FOZ	FG-PACCLR-32FOZ	FG-PACCLR-01

**POLY COLORANT**  
MIX RATIO = 8 oz per 1 gal

	16 OZ	1 GALLON
Beige	FG-PCLBEI-16FOZ	FG-PCLBEI-01G
Black	FG-PCLBLK-16FOZ	FG-PCLBLK-01G
Dark Gray	FG-PCLDGY-16FOZ	FG-PCLDGY-01G
Enchanted Green	FG-PCLEGR-16FOZ	FG-PCLEGR-01G
Handicap Blue	FG-PCLHBL-16FOZ	FG-PCLHBL-01G
Latte	FG-PCLLAT-16FOZ	FG-PCLLAT-01G
Light Gray	FG-PCLLGY-16FOZ	FG-PCLLGY-01G
Medium Gray	FG-PCLMGY-16FOZ	FG-PCLMGY-01G
Mocha	FG-PCLMOC-16FOZ	FG-PCLMOC-01G
Safety Blue	FG-PCLSAB-16FOZ	FG-PCLSAB-01G
Safety Red	FG-PCLSAR-16FOZ	FG-PCLSAR-01G
Safety Yellow	FG-PCLSAY-16FOZ	FG-PCLSAY-01G
Shadow Gray	FG-PCLSHG-16FOZ	FG-PCLSHG-01G
Tan	FG-PCLTAN-16FOZ	FG-PCLTAN-01G
Tile Red	FG-PCLTRD-16FOZ	FG-PCLTRD-01G
White	FG-PCLWHT-16FOZ	FG-PCLWHT-01G

**POLY PATCH**  
MIX RATIO = 1A:1B (Example: 1 gal A:1 gal B)

PART A	1 GALLON	5 GALLON
Poly Patch	FG-PJFACL-01G	FG-PJFACL-05G
PART B	1 GALLON	5 GALLON
Poly Patch	FG-PJFB-01G	FG-PJFB-05G
Poly Patch - EZ	FG-PJFBEZ-01G	FG-PJFBEZ-05G

# POLYURETHANE (PU)

adaptable • high-solids • two-component • applicator skill level 3-5

Mix and match components to meet your installation needs.

Before selecting, consider temperature, humidity, schedule, applicator's skill level, and substrate.



## CHOOSE THE COATING (HP or HS)



**HP PART B**  
advanced to expert applicators,  
high-chemically resistant top coat, 3-5 mils

**HS PART B**  
high-shine base,  
cap & top coats, 8-20 mils

**CHOOSE THE FINISH (PART A)**  
HP SATIN mid-application temps & RH  
HP GLOSS average application temps & higher RH

**CHOOSE THE SPEED (PART A)**  
HS EZ easy-to-apply, slow cure, high application temps & RH  
HS FC expert applicators, fast cure, low application temps & RH

### Apply it CLEAR or add POLY COLORANT:



HP GLOSS KITS: SAMPLE (20 OZ) • STANDARD (1.25 GAL)  
HP SATIN & HS KITS: SAMPLE (24 OZ) • STANDARD (1.5 GAL)  
BULK ITEMS: BUCKET (5 GAL) • DRUM (50 GAL)



**PART B, PUHP (POLYURETHANE HP, HIGH-PERFORMANCE)**

SEE PART A FOR MIX RATIOS

	16 OZ	1 GALLON	5 GALLON
<b>Part B</b>	FG-PUHPB-16FOZ	FG-PUHPB-01G	FG-PUHPB-05G

**PART A, PUHP (POLYURETHANE HP, HIGH-PERFORMANCE)**

MIX RATIO = 1A:4B (Example: 1 qt A:1 gal B)

	8 OZ	32 OZ	5 GALLON
<b>Gloss</b>	FG-PUHPACGL-08FOZ	FG-PUHPACGL-32FOZ	FG-PUHPACGL-05G

**PART A, PUHP (POLYURETHANE HP, HIGH-PERFORMANCE)**

MIX RATIO = 1A:2B (Example: 1/2 gal A:1 gal B)

	8 OZ	½ GALLON	5 GALLON
<b>Satin</b>	FG-PUHPACSA-08FOZ	FG-PUHPACSA-HG	FG-PUHPACSA-05G

**PART A, PUHS (POLYURETHANE HS, HIGH-SHINE)**

SEE PART B FOR MIX RATIO

	16 OZ	1 GALLON	5 GALLON	50 GALLON
<b>EZ</b>	FG-PUHSAEZ-16FOZ	FG-PUHSAEZ-01G	FG-PUHSAEZ-05G	FG-PUHSAEZ-50G
<b>FC</b>	FG-PUHSAFC-16FOZ	FG-PUHSAFC-01G	FG-PUHSAFC-05G	FG-PUHSAFC-50G

**PART B, PUHS (POLYURETHANE HS, HIGH-SHINE)**

MIX RATIO = 2A:1B (Example: 1 gal A:1/2 gal B)

	8 OZ	½ GALLON	5 GALLON	50 GALLON
<b>Part B</b>	FG-PUHSB-08FOZ	FG-PUHSB-HG	FG-PUHSB-05G	FG-PUHSB-50G

**POLY COLORANT**

MIX RATIO = 8 oz per 1 gal

	16 OZ	1 GALLON
<b>Beige</b>	FG-PCLBEI-16FOZ	FG-PCLBEI-01G
<b>Black</b>	FG-PCLBLK-16FOZ	FG-PCLBLK-01G
<b>Dark Gray</b>	FG-PCLDGY-16FOZ	FG-PCLDGY-01G
<b>Enchanted Green</b>	FG-PCLEGR-16FOZ	FG-PCLEGR-01G
<b>Handicap Blue</b>	FG-PCLHBL-16FOZ	FG-PCLHBL-01G
<b>Latte</b>	FG-PCLLAT-16FOZ	FG-PCLLAT-01G
<b>Light Gray</b>	FG-PCLLGY-16FOZ	FG-PCLLGY-01G
<b>Medium Gray</b>	FG-PCLMGY-16FOZ	FG-PCLMGY-01G
<b>Mocha</b>	FG-PCLMOC-16FOZ	FG-PCLMOC-01G
<b>Safety Blue</b>	FG-PCLSAB-16FOZ	FG-PCLSAB-01G
<b>Safety Red</b>	FG-PCLSAR-16FOZ	FG-PCLSAR-01G
<b>Safety Yellow</b>	FG-PCLSAY-16FOZ	FG-PCLSAY-01G
<b>Shadow Gray</b>	FG-PCLSHG-16FOZ	FG-PCLSHG-01G
<b>Tan</b>	FG-PCLTAN-16FOZ	FG-PCLTAN-01G
<b>Tile Red</b>	FG-PCLTRD-16FOZ	FG-PCLTRD-01G
<b>White</b>	FG-PCLWHT-16FOZ	FG-PCLWHT-01G

**POLY PATCH**

MIX RATIO = 1A:1B

<b>PART A</b>	1 GALLON	5 GALLON
<b>Poly Patch</b>	FG-PJFACLR-01G	FG-PJFACLR-05G
<b>PART B</b>	1 GALLON	5 GALLON
<b>Poly Patch</b>	FG-PJFB-01G	FG-PJFB-05G
<b>Poly Patch - EZ</b>	FG-PJFBEZ-01G	FG-PJFBEZ-05G

## ACRYLICS

UV-resistant • cost-effective • waterproof decking • applicator skill level 1-5



**KRETUS® APC (ACRYLIC POLYMER CONCRETE)** is a two-component, durable, waterproofing concrete for patching, sloping, resurfacing, and overlays. Use Basecoat for patching, sloping, and screed coats. Use Textures 2.0-3.0 for decorative overlays.

### PART A

MIX RATIO = 1 gal A:50 lbs B

	1 GALLON	5 GALLON	50 GALLON	275 GALLON
<b>Admix</b>	FG-AADMX-01G	FG-AADMX-05G	FG-AADMX-50G	FG-AADMX-275G
<b>Admix Concentrate</b>	-	FG-AADMXC-05G	FG-AADMXC-50G	FG-AADMXC-275G

**KITS: STANDARD (1 GAL A, 50 LBS B)**

**BULK ITEMS: BUCKET (5 GAL) • DRUM (50 GAL) • TOTE (275 GAL)**



### PART B

SEE PART A FOR MIX RATIO

	50 LBS
<b>Basecoat - Gray</b>	FG-APCBCGRY-50LB
<b>Texture 2.0 - Gray</b>	FG-APCTX2GRY-50LB
<b>Texture 2.0 - White</b>	FG-APCTX2WHT-50LB
<b>Texture 3.0 - Gray</b>	FG-APCTX3GRY-50LB
<b>Texture 3.0 - White</b>	FG-APCTX3WHT-50LB

### APC FAST/SLOW CONTROL

MIX RATIO = 1 oz per standard kit

	32 OZ
<b>Fast Control</b>	FG-APCFAS-32SOZ
<b>Slow Control</b>	FG-APCSLOW-32SOZ

**KRETUS® BONDER RESIN** excels as a high-viscosity acrylic blend for priming concrete before installing APC. It can also be used with Fiberglass over plywood for waterproof decking.

### ACRYLIC PRIMER

MIX RATIO = 1 gal:1 qt water or undiluted

	1 GALLON	5 GALLON	50 GALLON	275 GALLON
<b>Bonder Resin</b>	FG-APBR-01G	FG-APBR-05G	FG-APBR-50G	FG-APBR-275G

**SIZES: STANDARD (1 GAL) • BUCKET (5 GAL) • DRUM (50 GAL) • TOTE (275 GAL)**



**KRETUS® ACRYLIC SEALERS** are UV-resistant co-polymer blends that provide durable gloss and low gloss finishes for concrete, wood, and masonry. Choose WB (water-based) for a long wet-edge or SB (solvent-based) for fast drying and quick recoat.

When pigmenting Acrylic Sealer, choose Accent for light color values, Medium for medium color, and Deep for dark.

**PIGMENTED ACRYLIC SEALERS**  
SEE WB COLORANT FOR MIX RATIO

	5 GALLON
<b>WB Base - Accent</b>	FG-ASWBABA-05G
<b>WB Base - Medium</b>	FG-ASWB MBA-05G
<b>WB Base - Deep</b>	FG-ASWBDBA-05G

**WB COLORANT**  
MIX RATIO = 16 oz per 5 gal

TRENDING COLORS	16 OZ
<b>Adobe</b>	FG-WBCLADB-16FOZ
<b>Arizona Tan</b>	FG-WBCLAZT-16FOZ
<b>Charcoal</b>	FG-WBCLCHA-16FOZ
<b>Executive Gray</b>	FG-WBCLEXE-16FOZ
<b>Mud Pie</b>	FG-WBCLMUD-16FOZ
<b>Sahara</b>	FG-WBCLSAH-16FOZ
<b>Sand</b>	FG-WBCLSAN-16FOZ
<b>Storm</b>	FG-WBCLSTO-16FOZ
<b>White</b>	FG-WBCLWHT-16FOZ

ADDITIONAL COLORS	16 OZ
<b>Beachwood</b>	FG-WBCLBEA-16FOZ
<b>Cherrywood</b>	FG-WBCLCHE-16FOZ
<b>Clay</b>	FG-WBCLCLA-16FOZ
<b>Coral</b>	FG-WBCLCOR-16FOZ
<b>Driftwood</b>	FG-WBCLDRI-16FOZ
<b>Lagoon</b>	FG-WBCLLAG-16FOZ
<b>Maple</b>	FG-WBCLMAP-16FOZ
<b>Moss</b>	FG-WBCLMOS-16FOZ
<b>Sea Blue</b>	FG-WBCLSBL-16FOZ
<b>Soldier</b>	FG-WBCLSOL-16FOZ
<b>Sphynx</b>	FG-WBCLSPX-16FOZ
<b>Steel</b>	FG-WBCLSTE-16FOZ

**CLEAR ACRYLIC SEALERS**  
SINGLE-COMPONENT PRODUCT

	8 OZ	1 GALLON	5 GALLON	50 GALLON	275 GALLON
<b>SB Gloss</b>	FG-ASSBG-08FOZ	FG-ASSBG-01G	FG-ASSBG-05G	FG-ASSBG-50G	-
<b>SB Low Gloss</b>	FG-ASSBLG-08FOZ	FG-ASSBLG-01G	FG-ASSBLG-05G	FG-ASSBLG-50G	-
<b>WB Gloss</b>	FG-ASWBGCLR-08FOZ	FG-ASWBGCLR-01G	FG-ASWBGCLR-05G	FG-ASWBGCLR-50G	FG-ASWBGCLR-275G
<b>WB Low Gloss</b>	FG-ASWBLGCLR-08FOZ	FG-ASWBLGCLR-01G	FG-ASWBLGCLR-05G	FG-ASWBLGCLR-50G	FG-ASWBLGCLR-275G



**PIGMENTED SIZE: STANDARD (5 GAL, 16 OZ)**

**CLEAR SIZES: SAMPLE (8 OZ) • STANDARD (1 GAL) • BUCKET (5 GAL) • DRUM (50 GAL) • TOTE (275 GAL)**



## TRADITIONAL ESD

Shield employees, equipment, and processes against harmful ESD (electrostatic discharge) with this traditional ESD System featuring **KRETUS® WB CONDUCTIVE PRIMER** and **KRETUS® POLYASPARTIC ESD** top coat. This two-coat system protects against heavy traffic, chemical spills, moisture intrusion, and microbial growth, all while maintaining its ESD properties. Based on the underlying substrate treatment, it can be installed as a high-build system with no effect on resistance readings.



### PART B, WB EPOXY SEE PART A FOR MIX RATIO

	32 OZ	1 GALLON
WB Epoxy Part B	FG-WBEB-32FOZ	FG-WBEB-01G

### PART A, WB CONDUCTIVE PRIMER MIX RATIO = 4A:1B (Example: 1 gal A:32 oz B)

	1 GALLON	4 GALLON
WB Conductive Primer Part A - Black*	FG-WBECDP-01G	FG-WBECDP-04G

### COLORS:



### TOP COAT

MIX RATIO = 1 gal A:1 gal B:1 ESD Additive:16 oz Anti-Slip Bead 50/100

	32 OZ	1 GALLON	5 GALLON
Polyaspartic 92 Part A EZ	-	FG-PA92AEZ-01G	FG-PA92AEZ-05G
Polyaspartic 92 Part A FC	-	FG-PA92AFC-01G	FG-PA92AFC-05G
Polyaspartic 92 Part B	-	FG-PA92B-01G	FG-PA92B-05G
ESD Additive	-	FG-ESDADD-02	-
Anti-Slip Bead 50/100	FG-ASLB105-32SOZ	-	-
Poly Colorant	See page 23 for Poly Colorant colors		

\* Do not use WB Epoxy Part A

# NANOTUBE ESD

Get the benefits of a traditional ESD system—and more—in a single top coat! **KRETUS® SELECT ESD** kits incorporate carbon nanotube technology to enhance wear resistance and strengthen ESD control. Select the Epoxy for ease of installation or choose Poly for even better durability, wear resistance, and color stability.



Only available in **Select ESD Kits**.



**COLORS:**



## EPOXY CONDUCTIVE

COLOR	1.5 GALLON KIT
Stone	KIT-10402EZS
Slate	KIT-10403EZS
Greige	KIT-10404EZS
Baja	KIT-10405EZS
Ocean	KIT-10406EZS
Maroon	KIT-10407EZS

## EPOXY DISSIPATIVE

COLOR	1.5 GALLON KIT
Stone	KIT-10302EZS
Slate	KIT-10303EZS
Greige	KIT-10304EZS
Baja	KIT-10305EZS
Ocean	KIT-10306EZS
Maroon	KIT-10307EZS

## POLY CONDUCTIVE

COLOR	1.5 GALLON KIT
Stone	KIT-20402EZS
Slate	KIT-20403EZS
Greige	KIT-20404EZS
Baja	KIT-20405EZS
Ocean	KIT-20406EZS
Maroon	KIT-20407EZS

## POLY DISSIPATIVE

COLOR	1.5 GALLON KIT
Stone	KIT-20302EZS
Slate	KIT-20303EZS
Greige	KIT-20304EZS
Baja	KIT-20305EZS
Ocean	KIT-20306EZS
Maroon	KIT-20307EZS

# WB EPOXY

KRETUS® WB Epoxy is an economical, user-friendly, two-component, water-borne system. This product is an excellent primer for use under other thin mil coatings and performs well as an interior sealer.



**Combine any Part A and Part B.**

See **Product Guide & General Overviews** for application techniques



**KITS: STANDARD (1.25 GAL) • LARGE (5 GAL)**  
**BULK ITEMS: BUCKET (5 GAL) • DRUM (50 GAL)**

## PART A

**MIX RATIO = 4A:1B (Example: 1 gal A:32 oz B)**

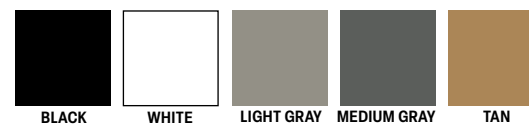
	1 GALLON	4 GALLON	50 GALLON
<b>Black</b>	FG-WBEACLR-01G	FG-WBEACLR-04G	FG-WBEACLR-50G
<b>Clear</b>	FG-WBEABLK-01G	FG-WBEABLK-04G	FG-WBEABLK-50G
<b>Light Gray</b>	FG-WBEALGY-01G	FG-WBEALGY-04G	FG-WBEALGY-50G
<b>Medium Gray</b>	FG-WBEAMGY-01G	FG-WBEAMGY-04G	FG-WBEAMGY-50G
<b>Tan</b>	FG-WBEATAN-01G	FG-WBEATAN-04G	FG-WBEATAN-50G
<b>White</b>	FG-WBEAWHT-01G	FG-WBEAWHT-04G	FG-WBEAWHT-50G

## PART B

**SEE PART A FOR MIX RATIO**

	32 OZ	1 GALLON	50 GALLON
	FG-WBEB-32FOZ	FG-WBEB-01G	FG-WBEB-50G

## COLORS:



# METALLIC

For a beautiful, 3-D reflective coat, combine **KRETUS® METALLIC** pigments with Top Shelf® Epoxy, Polyaspartic, or Polyurethane HS.



## METALLIC PIGMENT FOR TSE, PA, AND PUHS MIX RATIO = 8 oz per 1/2 to 1 gal Part A



	2 OZ	8 OZ	32 OZ
<b>Antique Silver</b>	FG-MPPANS-02SOZ	FG-MPPANS-08SOZ	FG-MPPANS-32SOZ
<b>Black</b>	FG-MPPBLA-02SOZ	FG-MPPBLA-08SOZ	FG-MPPBLA-32SOZ
<b>Cabernet</b>	FG-MPPCAB-02SOZ	FG-MPPCAB-08SOZ	FG-MPPCAB-32SOZ
<b>California Gold</b>	FG-MPPCAG-02SOZ	FG-MPPCAG-08SOZ	FG-MPPCAG-32SOZ
<b>Carbon</b>	FG-MPPCAR-02SOZ	FG-MPPCAR-08SOZ	FG-MPPCAR-32SOZ
<b>Cherrywood</b>	FG-MPPCHW-02SOZ	FG-MPPCHW-08SOZ	FG-MPPCHW-32SOZ
<b>Dark Blue</b>	FG-MPPDBL-02SOZ	FG-MPPDBL-08SOZ	FG-MPPDBL-32SOZ
<b>Dark Gray</b>	FG-MPPGRY-02SOZ	FG-MPPGRY-08SOZ	FG-MPPGRY-32SOZ
<b>Forest Green</b>	FG-MPPFGRN-02SOZ	FG-MPPFGRN-08SOZ	FG-MPPFGRN-32SOZ
<b>Gold Glitter</b>	FG-MPPGGL-02SOZ	FG-MPPGGL-08SOZ	FG-MPPGGL-32SOZ
<b>Ivory</b>	FG-MPPIVO-02SOZ	FG-MPPIVO-08SOZ	FG-MPPIVO-32SOZ
<b>Jade Green</b>	FG-MPPJGN-02SOZ	FG-MPPJGN-08SOZ	FG-MPPJGN-32SOZ
<b>New Copper</b>	FG-MPPNCO-02SOZ	FG-MPPNCO-08SOZ	FG-MPPNCO-32SOZ
<b>Olive</b>	FG-MPPOLV-02SOZ	FG-MPPOLV-08SOZ	FG-MPPOLV-32SOZ
<b>Sedona</b>	FG-MPPSED-02SOZ	FG-MPPSED-08SOZ	FG-MPPSED-32SOZ
<b>Silver Glitter</b>	FG-MPPSGL-02SOZ	FG-MPPSGL-08SOZ	FG-MPPSGL-32SOZ
<b>Sky Blue</b>	FG-MPPSKY-02SOZ	FG-MPPSKY-08SOZ	FG-MPPSKY-32SOZ
<b>Sterling</b>	FG-MPPSTL-02SOZ	FG-MPPSTL-08SOZ	FG-MPPSTL-32SOZ
<b>Sunset Gold</b>	FG-MPPSGO-02SOZ	FG-MPPSGO-08SOZ	FG-MPPSGO-32SOZ
<b>Violet</b>	FG-MPPVIO-02SOZ	FG-MPPVIO-08SOZ	FG-MPPVIO-32SOZ



## ALIPHATIC MC

This single-component aliphatic urethane works best as a top coat or concrete sealer.

To pigment, add 8 oz of Poly Colorant to every gallon of Aliphatic MC.



kretus.com/  
products

### ALIPHATIC MC SINGLE-COMPONENT PRODUCT

	1 GALLON	5 GALLON
Gloss	FG-PUAALPG-01G	FG-PUAALPG-05G
Low Gloss	FG-PUAALPLG-01G	FG-PUAALPLG-05G
Poly Colorant	See page 23 for Poly Colorant colors	

## HYDROTHANE

Use this water-based polyurethane to protect Metallic coats, waterproof decking, decorative concrete overlays, and grind-and-seal installations.



**KITS: STANDARD (1.5 gal)**  
**BULK ITEMS: BUCKET (5 gal)**

### HYDROTHANE GLOSS - 2-COMPONENT PRODUCT

	STANDARD KIT (1.5 GAL)	BULK KIT (15 GAL)
Part B - Gloss	FG-WBUBTG-HG	FG-WBUBTG-05G
Part A - Gloss	FG-WBUATG-01G	FG-WBUATG-05G*

### HYDROTHANE LOW GLOSS - 2-COMPONENT PRODUCT

	STANDARD KIT (1.5 GAL)	BULK KIT (15 GAL)
Part B - Low Gloss	FG-WBUBTLG-HG	FG-WBUBTLG-05G
Part A - Low Gloss	FG-WBUATLG-01G	FG-WBUATLG-05G*

\* Will need 2, 5 gallon buckets of Part A for bulk kits

## ECOMAGNETIC™

Experience the future of tile installation with **KRETUS® ECOMAGNETIC™**—a revolutionary system that eliminates the need for adhesives. The innovative system harnesses the power of magnets, making it incredibly easy to use on nearly any surface. Featuring reusable magnetic tabs that maintain their stickiness, you'll never have to worry about damaging your tiles or leaving behind any residue.



### ECOMAGNETIC COATING

STANDARD MIX RATIO = 1/2 gal A:1/2 gal B:18 lbs C

	STANDARD KIT COMPONENTS
PART A	FG-EMA-HG
PART B	FG-EMB-HG
PART C	FG-EMC-18#
	<b>100 TABS/ROLL</b>
TABS	FG-EMTAB-EA
	<b>STANDARD KIT</b>
KIT (COATING ONLY)	KIT-EMS

## MATTING ADDITIVE

Can be added to any KRETUS Top Shelf® Epoxy, Polyaspartic, Polyurethane HS, WB Epoxy, and Aliphatic MC coatings to reduce gloss finish.



kretus.com/  
products

### MATTING ADDITIVE

MIX RATIO = 1-2 LBS:1 GALLON, MAKE SAMPLES

	1 LB	10 LBS
Matting Additive	FG-MADD-01LB	FG-MADD-10LB

## CLEANING PRODUCTS

See **Maintenance & Cleaning Guide** for more information on **Solvent, Coating and Power Cleaners**.



### COATING CLEANER - PH-NEUTRAL DAILY COATING CLEANER

	32 OZ	1 GALLON	5 GALLON	50 GALLON
Coating Cleaner	FG-CCLEAN-32FOZ	FG-CCLEAN-01G	FG-CCLEAN-05G	FG-CCLEAN-50G

### POWER CLEANER - PH-NEUTRAL SPOT-CHECK COATING CLEANER

	32 OZ	1 GALLON	5 GALLON	50 GALLON
Power Cleaner	FG-POCLN-32FOZ	FG-POCLN-01G	FG-POCLN-05G	FG-POCLN-50G

### SC (SOLVENT CLEANER)

	32 OZ	1 GALLON	5 GALLON	50 GALLON
Solvent Cleaner	FG-SLVCLN-32FOZ	FG-SLVCLN-01G	FG-SLVCLN-05G	FG-SLVCLN-50G

## ANTI- GRAFFITI

Tired of graffiti ruining your public spaces? Try this single-component coating for long-lasting protection against and easy removal of graffiti. It's ideal for graffiti-prone areas like transit stations, bridges, schools, and public facilities.



### ANTI-GRAFFITI SEALER SINGLE-COMPONENT PRODUCT

	1 GALLON	5 GALLON	50 GALLON
Anti -Graffiti Sealer	FG-AGS-01G	FG-AGS-05G	FG-AGS-50G

## ANTI-SLIP

Use KRETUS® ANTI-SLIP and other surface texture granules to increase abrasion and skid resistance.

SIZES: 2.5 LBS • 32 OZ • 10 LBS



### ANTI-SLIP TEX

MIX RATIO = 2.75 lbs per 1 standard kit

SIZE	TEX 50
2.5 lbs	FG-ASLTX50-EA

### ANTI-SLIP BEAD

MIX RATIO = 8-16 oz per 1 gal

SIZE	BEAD 100	BEAD 50/100	BEAD 50	BEAD 20/30
32 oz	FG-ASLBE100-32SOZ	FG-ASLB105-32SOZ	FG-ASLBE50-32SOZ	FG-ASLBE23-32SOZ

### ANTI-SLIP AO (ALUMINUM OXIDE)

PRODUCT FOR BROADCAST ONLY

SIZE	AO 36	AO 24
10 lbs	FG-ASLOX36-10LB	FG-ASLOX24-10LB

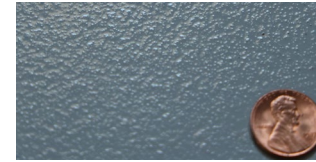
### ANTI-SLIP AO (ALUMINUM OXIDE)

MIX RATIO = 1-2 lbs to 1 standard TSE or PA kit

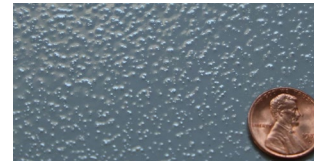
SIZE	AO 220	AO 120	AO 80	AO 60
10 lbs	FG-ASLOX220-10LB	FG-ASLOX120-10LB	FG-ASLOX80-10LB	FG-ASLOX60-10LB



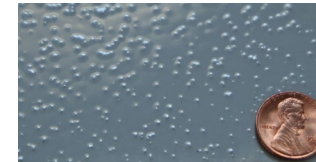
ANTI-SLIP AO 220



ANTI-SLIP AO 120



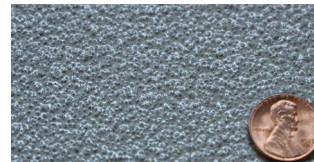
ANTI-SLIP AO 80



ANTI-SLIP AO 60



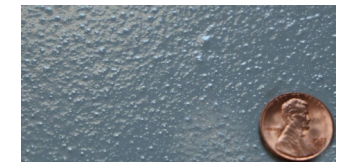
ANTI-SLIP AO 36



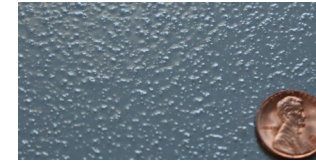
ANTI-SLIP AO 24



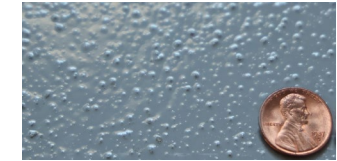
ANTI-SLIP BEAD 100



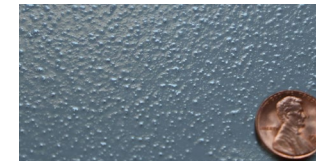
ANTI-SLIP BEAD 50/100



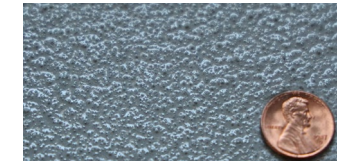
ANTI-SLIP BEAD 50



ANTI-SLIP BEAD 20/30



ANTI-SLIP TEX 50



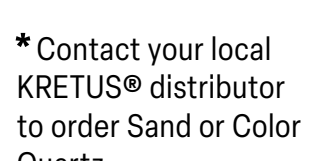
COLOR QUARTZ 40-S\*



SAND 60\*



SAND 30\*



SAND 20\*



kretus.com/  
anti-slip

\* Contact your local KRETUS® distributor to order Sand or Color Quartz



**COLORANTS**

**TOP SHELF® EPOXY COLORANT**

	16 OZ	1 GALLON
Beige	FG-TSECLBEI-16FOZ	FG-TSECLBEI-01G
Black	FG-TSECLBLK-16FOZ	FG-TSECLBLK-01G
Dark Gray	FG-TSECLDGY-16FOZ	FG-TSECLDGY-01G
Enchanted Green	FG-TSECLEGN-16FOZ	FG-TSECLEGN-01G
Handicap Blue	FG-TSECLHAB-16FOZ	FG-TSECLHAB-01G
Latte	FG-TSECLLAT-16FOZ	FG-TSECLLAT-01G
Light Gray	FG-TSECLLGY-16FOZ	FG-TSECLLGY-01G
Medium Gray	FG-TSECLMGY-16FOZ	FG-TSECLMGY-01G
Mocha	FG-TSECLMOC-16FOZ	FG-TSECLMOC-01G
Safety Blue	FG-TSECLSAB-16FOZ	FG-TSECLSAB-01G
Safety Red	FG-TSECLSAR-16FOZ	FG-TSECLSAR-01G
Safety Yellow	FG-TSECLSAY-16FOZ	FG-TSECLSAY-01G
Shadow Gray	FG-TSECLSHG-16FOZ	FG-TSECLSHG-01G
Tan	FG-TSECLTAN-16FOZ	FG-TSECLTAN-01G
Tile Red	FG-TSECLTRD-16FOZ	FG-TSECLTRD-01G
White	FG-TSECLWHT-16FOZ	FG-TSECLWHT-01G

**POLY COLORANT**

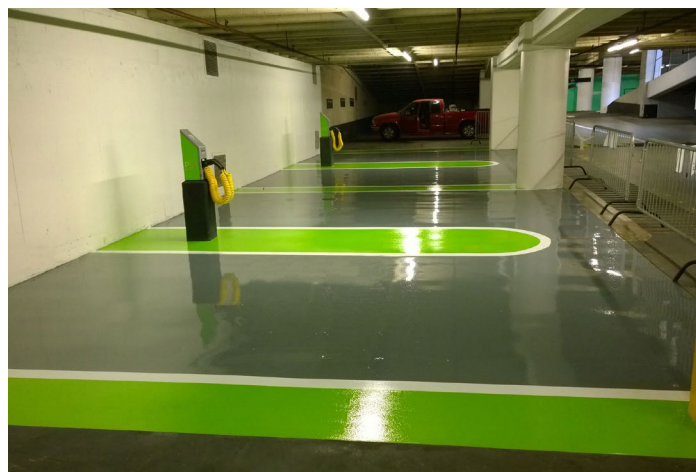
	16 OZ	1 GALLON
Beige	FG-PCLBEI-16FOZ	FG-PCLBEI-01G
Black	FG-PCLBLK-16FOZ	FG-PCLBLK-01G
Dark Gray	FG-PCLDGY-16FOZ	FG-PCLDGY-01G
Enchanted Green	FG-PCLEGR-16FOZ	FG-PCLEGR-01G
Handicap Blue	FG-PCLHBL-16FOZ	FG-PCLHBL-01G
Latte	FG-PCLLAT-16FOZ	FG-PCLLAT-01G
Light Gray	FG-PCLLGY-16FOZ	FG-PCLLGY-01G
Medium Gray	FG-PCLMGY-16FOZ	FG-PCLMGY-01G
Mocha	FG-PCLMOC-16FOZ	FG-PCLMOC-01G
Safety Blue	FG-PCLSAB-16FOZ	FG-PCLSAB-01G
Safety Red	FG-PCLSAR-16FOZ	FG-PCLSAR-01G
Safety Yellow	FG-PCLSAY-16FOZ	FG-PCLSAY-01G
Shadow Gray	FG-PCLSHG-16FOZ	FG-PCLSHG-01G
Tan	FG-PCLTAN-16FOZ	FG-PCLTAN-01G
Tile Red	FG-PCLTRD-16FOZ	FG-PCLTRD-01G
White	FG-PCLWHT-16FOZ	FG-PCLWHT-01G

**ACRYLIC WB COLORANT**

TRENDING COLORS	16 OZ
Adobe	FG-WBCLADB-16FOZ
Arizona Tan	FG-WBCLAZT-16FOZ
Charcoal	FG-WBCLCHA-16FOZ
Executive Gray	FG-WBCLEXE-16FOZ
Mud Pie	FG-WBCLMUD-16FOZ
Sahara	FG-WBCLSAH-16FOZ
Sand	FG-WBCLSAN-16FOZ
Storm	FG-WBCLSTO-16FOZ
White	FG-WBCLWHT-16FOZ
ADDITIONAL COLORS	16 OZ
Beachwood	FG-WBCLBEA-16FOZ
Cherrywood	FG-WBCLCHE-16FOZ
Clay	FG-WBCLCLA-16FOZ
Coral	FG-WBCLCOR-16FOZ
Driftwood	FG-WBCLDRI-16FOZ
Lagoon	FG-WBCLLAG-16FOZ
Maple	FG-WBCLMAP-16FOZ
Moss	FG-WBCLMOS-16FOZ
Sea Blue	FG-WBCLSBL-16FOZ
Soldier	FG-WBCLSOL-16FOZ
Sphinx	FG-WBCLSPX-16FOZ
Steel	FG-WBCLSTE-16FOZ

**UPC COLORANT**

	4 OZ	1 GALLON
Black	FG-UPCCLBLK-04FOZ	FG-UPCCLBLK-01G
Blue	FG-UPCCLBLU-04FOZ	FG-UPCCLBLU-01G
Bone	FG-UPCCLBON-04FOZ	FG-UPCCLBON-01G
Brown	FG-UPCCLBRN-04FOZ	FG-UPCCLBRN-01G
Clay	FG-UPCCLCLY-04FOZ	FG-UPCCLCLY-01G
Gray	FG-UPCCLGRY-04FOZ	FG-UPCCLGRY-01G
Green	FG-UPCCLGRN-04FOZ	FG-UPCCLGRN-01G
Mustard	FG-UPCCLMUS-04FOZ	FG-UPCCLMUS-01G
Red	FG-UPCCLRED-04FOZ	FG-UPCCLRED-01G





## HARD SAMPLES

Deliver customer satisfaction with hard samples and on-site testing. Hard samples allow your clients to see and feel their options. On-site testing—from prime to top coat—ensures your client’s expectations for beautiful, safe floors are met.

### 4" x 4" RING SAMPLES COMPARE COLORS, TEXTURES, AND FINISHES

PRODUCT	ITEM NO.
Acrylic Sealer WB Trending Colors	FG-SMPLASEAL-EA
Anti-Slip	FG-SMPLASLIP-EA
Color Chip Over Top Shelf® Epoxy	FG-SMPLCCT-EA
Color Chip Over Urethane Polymer Concrete	FG-SMPLCCUPC-EA
Color Quartz Over Top Shelf® Epoxy	FG-SMPLCQTB-EA
Color Quartz Over Urethane Polymer Concrete	FG-SMPLCQUPC-EA
Hydrothane	FG-SMHYDROC-EA
Metallic	FG-SMPLMETT-EA
Metallic Top Coat	FG-SMSMTC-EA
NanoTube ESD Epoxy & Poly Dissipative	FG-SMNTESDD-EA
NanoTube ESD Epoxy & Poly Conductive	FG-SMNTESDC-EA
Top Shelf® Epoxy Hardener Options	FG-SMPLHARDO-EA
Traditional ESD	FG-SMPLESD-EA
TSE, Poly, WB Epoxy, Aliphatic MC Available Colors	FG-SMPLTPPW-EA
Urethane Polymer Concrete	FG-SMPLUPC-EA

### STEP SAMPLES SEE HOW EACH SYSTEM IS BUILT, FROM THE FIRST TO THE FINAL COAT

PRODUCT	ITEM NO.
Color Chip	FG-SMSCLC-EA
Color Quartz	FG-SMSCLQ-EA
Color Splash	FG-SMSCLS-EA
Floor 2 Cove Color Chip	FG-SMSCOVEC-EA
Floor 2 Cove CQ	FG-SMSCOVEQ-EA
Floor 2 Cove IND	FG-SMSCOVES-EA
Industrial Sand SL	FG-SMSIDSSL-EA
Industrial Sand RC	FG-SMSIDSRC-EA
Waterproof Decking 2.1	FG-SMSWPD-EA

### 2" x 6" COVE SAMPLES COMPARE WALL COVE FINISHES

PRODUCT	ITEM NO.
6" Epoxy Cove, Color	FG-SMPLECVS-EA
6" Epoxy Cove, Color Chip	FG-SMPLECVSQ-EA
6" Epoxy Cove, Color Quartz	FG-SMEPCCC-EA

4" x 4" RING SAMPLES



ACRYLIC SEALER WB



ANTI-SLIP



COLOR CHIP OVER TSE



COLOR CHIP OVER UPC



COLOR QUARTZ OVER TSE



COLOR QUARTZ OVER UPC



COMING SOON



METALLIC



COMING SOON

METALLIC TOP COAT



ESD NANOTUBE CONDUCTIVE



ESD NANOTUBE DISSIPATIVE



TSE HARDENER OPTIONS



TRADITIONAL ESD



TSE, POLY, WB EPOXY, ALIPHATIC MC



URETHANE POLYMER CONCRETE

2" x 6" COVE SAMPLES



EPOXY COVE, COLOR



EPOXY COVE, COLOR CHIP



EPOXY COVE, COLOR QUARTZ

STEP SAMPLES



COLOR CHIP



COLOR QUARTZ



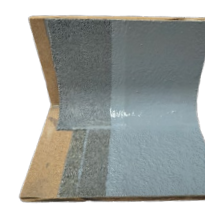
COLOR SPLASH



FLOOR 2 COVE COLOR CHIP



FLOOR 2 COVE CQ



FLOOR 2 COVE IND



INDUSTRIAL SAND SL



INDUSTRIAL SAND RC



WATERPROOF DECKING 2.1

# SELECT KITS

Economical Solutions For Busy Contractors.

Easy product selection • Reduced picking & mixing errors • Competitively priced • Fewer SKUs



**EPOXY**  
100%-solids • commercial grade



**POLY**  
85%-solids Polyaspartic  
fast (FC) or slow (EZ) cure



**EPOXY COVE**  
100%-solids • commercial grade  
wall cover



**EPOXY PATCH**  
100%-solids  
fast (FC) or slow (EZ) cure



**OMG BLOCKER**  
Oil, Moisture, and Gas blocker  
fast (FC) or slow (EZ) cure



**ESD EPOXY**  
nanotube technology  
Dissipative or Conductive



**ESD POLY**  
nanotube technology  
Dissipative or Conductive

**EPOXY**

<b>3 GALLON KIT</b>	
Beige	KIT-10101TH03
Clear	KIT-10201TH03
Light Gray	KIT-10401TH03

**POLY**

<b>2 GALLON KIT</b>	
EZ - Clear	KIT-285EZ0102
FC - Clear	KIT-285FC0102

**EPOXY COVE**

<b>1.5 GALLON KIT</b>	
TH - Clear	KIT-10103TH01

**EPOXY PATCH**

<b>2 GALLON KIT</b>	
EZ	KIT-1EZP02
FC	KIT-1FCP02

**OMG BLOCKER**

<b>3 GALLON KIT</b>	
EZ	KIT-10501MEZ03
FC	KIT-10501MFC03

**ESD EPOXY CONDUCTIVE**

<b>1.5 GALLON KIT</b>	
Stone	KIT-10402EZS
Slate	KIT-10403EZS
Greige	KIT-10404EZS
Baja	KIT-10405EZS
Ocean	KIT-10406EZS
Maroon	KIT-10407EZS

**ESD EPOXY DISSIPATIVE**

<b>1.5 GALLON KIT</b>	
Stone	KIT-10302EZS
Slate	KIT-10303EZS
Greige	KIT-10304EZS
Baja	KIT-10305EZS
Ocean	KIT-10306EZS
Maroon	KIT-10307EZS

**ESD POLY CONDUCTIVE**

<b>1.5 GALLON KIT</b>	
Stone	KIT-20402EZS
Slate	KIT-20403EZS
Greige	KIT-20404EZS
Baja	KIT-20405EZS
Ocean	KIT-20406EZS
Maroon	KIT-20407EZS

**ESD POLY DISSIPATIVE**

<b>1.5 GALLON KIT</b>	
Stone	KIT-20302EZS
Slate	KIT-20303EZS
Greige	KIT-20304EZS
Baja	KIT-20305EZS
Ocean	KIT-20306EZS
Maroon	KIT-20307EZS



## GENERAL QUESTIONS

714.694.2061 | [info@kretus.com](mailto:info@kretus.com)

## TECHNICAL QUESTIONS

### ***Michael Mulnix***

Sr. Technical Product Manager, Western Territories, USA  
916.757.4075 | [michael@kretus.com](mailto:michael@kretus.com)

### ***Samet Dy***

Sr. Technical Product Manager, Eastern Territories, USA  
714.922.5865 | [samet@kretus.com](mailto:samet@kretus.com)

### ***Dennis Beshear***

Sr. Technical Product Manager, South Central Territories, USA  
817.559.7591 | [dennis@kretus.com](mailto:dennis@kretus.com)

### ***Jaime Monarres***

Sr. Product Manager, Se habla Español  
424.348.5127 | [jaime@kretus.com](mailto:jaime@kretus.com)

### ***Ian Taubler***

Product Manager  
559.709.8480 | [ian@kretus.com](mailto:ian@kretus.com)

### ***Andrew Voss***

Product Manager  
920.254.2890 | [andrew@kretus.com](mailto:andrew@kretus.com)



[kretus.com](http://kretus.com)